



Onslow Gardens, Ongar, CM5

BUTLER & STAG



**Guide Price £550,000 -  
£575,000**

**A well-positioned four  
bedroom semi-detached  
home which offers fantastic  
potential for someone  
looking to make a perfect  
family home**



## **Freehold**

- Semi Detached Family Home
- Four Bedrooms
- Two Spacious Reception Rooms
- Kitchen/Breakfast Room
- Off Street Parking/Integral Garage
- Chain Free

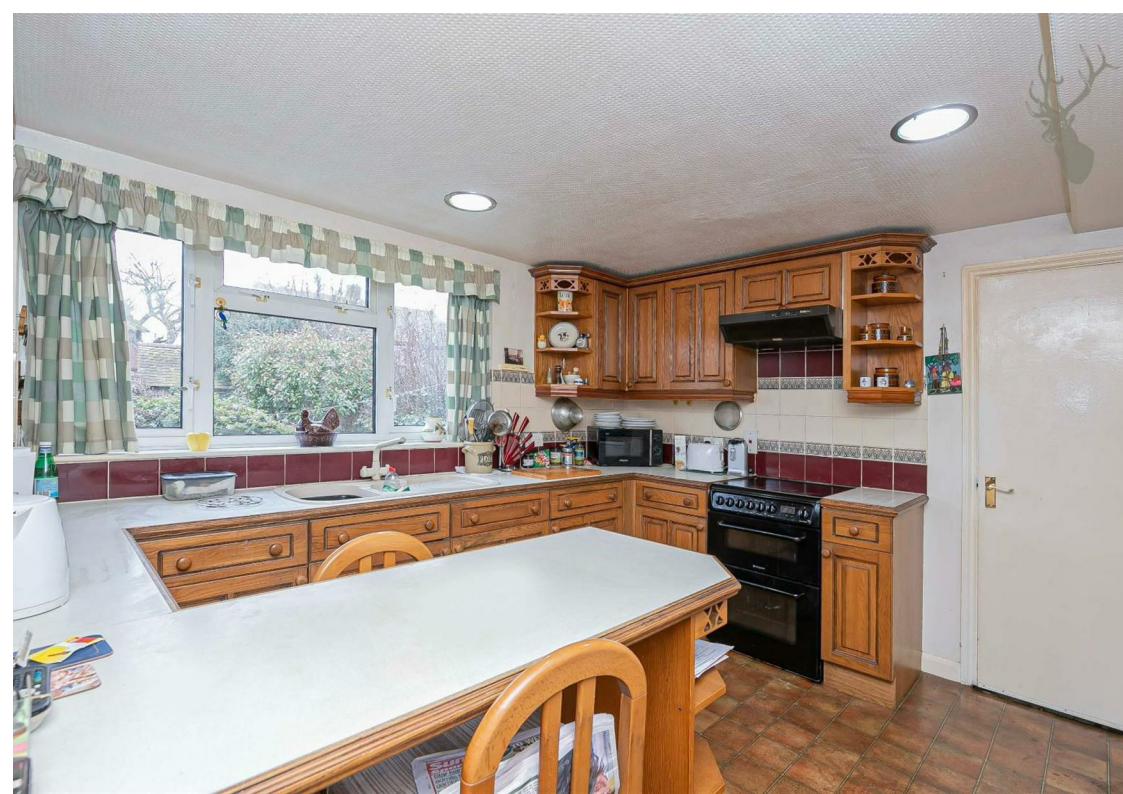
With flexible living space, this property comprises two spacious reception rooms, kitchen/breakfast room with access to the rear garden, utility room, a downstairs WC, and an integral garage complete the ground floor.

The first floor provides three bedrooms and a family bathroom. The second floor you will find a spacious bedroom with the option to add an en-suite

Externally to the rear you will find a 60' private rear garden which is not over looked from the other houses. The property includes off-street parking for three vehicles.

Onslow Gardens occupies a wonderful location positioned in the picturesque village of Ongar. There are good local shopping facilities available in the village with more comprehensive shopping in the town of Epping. The area has an excellent choice of well-regarded state and private schools.

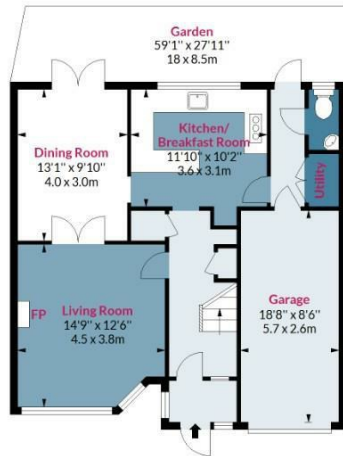




## Onslow Gardens, CM5

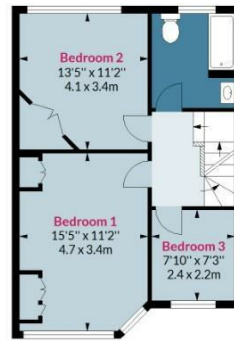
Approx. Gross Internal Area 1418 Sq Ft - 131.73 Sq M  
Approx. Gross Garage/ Shed Area 211 Sq Ft - 19.60 Sq M  
Approx. Gross Eaves Storage 111 Sq Ft - 10.31 Sq M  
Approx. Gross Total Area 1740 Sq Ft - 161.65 Sq M

BUTLER & STAG



### Ground Floor

Floor Area 614 Sq Ft - 57.04 Sq M  
(Excluding Garage)



### First Floor

Floor Area 492 Sq Ft - 45.71 Sq M



### Second Floor

Floor Area 312 Sq Ft - 28.98 Sq M



Measured according to RICS IPMS2. Floor plan is for illustrative purposes only and is not to scale. Every attempt has been made to ensure the accuracy of the floor plan shown, however all measurements, fixtures, fittings and data shown are an approximate interpretation for illustrative purposes only. 1 sq m = 10.76 sq feet.

lpaplus.com

Date: 02/03/2023

BUTLER & STAG

☎ 01992 667666

🏠 4 Forest Drive, Theydon Bois, Essex, CM16 7EY

✉ theydon@butlerandstag.com

IMPORTANT NOTICE - These particulars have been prepared in good faith and they are not intended to constitute part of an offer or contract. We have not performed a structural survey on this property and the services, appliances and specific fittings have not been tested. All photographs, measurements, floor plans and distances referred to are given as a guide and should not be relied upon.

www.butlerandstag.uk